

# SHERDS

July — September 2017



*Clockwise: Mackenzie Cook with Sallie Webb at **Expressions of Youth Award Ceremony**. Mackenzie won Best in Show (ages 11 to 15).*

***Cinco de Vino** participants stop for a quick selfie. The event was the Museum's most popular adult program to date.*

*Sloan Hickerson poses with Sallie Webb at the **Expressions of Youth Award Ceremony**. Sloan won first place in the 3D Art (ages 11 to 15).*

*A **Mary H. Herron Memorial Kite Festival** attendee proudly poses with her freshly made kite.*

# DIRECTIONS



Summers are a busy time at the Museum, and this year is no exception. Tourism season is well under way and families are choosing to visit the Museum in spite of construction. Many schools have also incorporated trips to the Museum as part of their summer school curriculum. Meanwhile, programs staff are busy with in-house "camps". Curatorial staff (including **Angelica**

**Bohanan**, our summer intern) are moving collections into the new storage facilities and installing new exhibits. They're also processing new acquisitions—over 100 were received from April to June. Staff are also beginning to move into their new office spaces.

At this year's Annual Dinner, donors and friends of the Museum received a "sneak preview" of the new Collections Storage facility and Mary Bratton Curtis Gallery—the latter of which is now open to the public. The renovated Lifeways Gallery, which highlights objects from our Collections, will open this month. The updated Gregory S. Perino Archaeological Study Area will also open in July.

Last, but not least, the enlarged ACRO Gallery, which houses our cast of *Acrocanthosaurus atokensis*, will be revealed in the fall, as will the refurbished Holland and Sallie Webb Family Learning Center. We anticipate the new lobby, Museum Store, and classroom will be completed in early winter.

Visit our website, [www.museumoftheredriver.org](http://www.museumoftheredriver.org), or follow us on Facebook and Instagram (@motr.idabel) to keep up with the construction project.

- Henry Moy, *The Quintus H. Herron Director*

## PEOPLE

Research curator Dr. **Fred Lange** received a certificate of appreciation from **Clemente Guido Martinez**, the Director of Culture and History for Managua, Nicaragua for his speech on the "Acahualinca footprints" at an **international seminar**. The footprints were originally thought to be 5,000 to 6,000 years old. However, in 2009, a group of volcanologists suggested they were only 2,200 years old. Dr. Lange disputed this new date due to the absence of relevant ceramics, lithics, and other cultural artifacts. He continues to support the older, original date.

Dr. Lange is an internationally recognized expert on Nicaraguan prehistory. He was joined in Nicaragua by **Cheryl Smallwood-Roberts** who was evaluating the area for future museum tours. If a tour takes place, the Acahualinca footprint site will be on the list!

### Herron Foundation Board of Directors

Daniel W. Eck  
Tina Foshee-Thomas, *Mayor of Idabel*  
Donald Herron, *President*  
Jan Herron, *Vice President*  
Richard Q. Herron  
John Ramsey  
Terry Walker  
Sallie Webb  
  
Henry Moy, *Executive Secretary*  
Lavetta Ward, *Treasurer*

### Idabel Museum Society Board of Directors

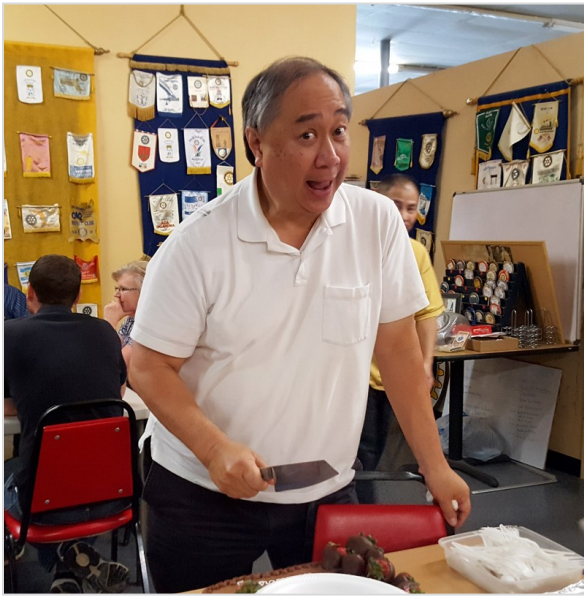
Dr. Robert Brooks  
Dr. Bruce King, *Vice President*  
Carolynn Neal  
Judy Petre, *President*  
John Ramsey  
Dr. Lewis Stiles, *Secretary-Treasurer*  
Terry Walker

### Museum of the Red River Staff

Christina Eastep, *Curatorial Assistant*  
Brian Hendershot, *Head of Communications and Outreach*  
John Malin, *Museum Assistant*  
Sherron Mitchell, *Museum Store Shop Manager*  
Henry Moy, *The Quintus H. Herron Director*  
Cheryl Smallwood-Roberts, *Head of Curatorial Programs*  
Vickie Smith, *Business Manager*  
Daniel Vick, *The Mary H. Herron Keeper of Collections*



▲ Dr. Fred Lange receiving his certificate of appreciation from **Clemente Guido Martinez** of Managua, the Director of Culture and History for Managua, Nicaragua [Photo courtesy of Dr. Lange]



**Cheryl Smallwood-Roberts**, Head of Curatorial Programs, **Brian Hendershot**, Head of Communications and Outreach, and **Henry Moy**, Director, attended the **American Alliance of Museums Annual Meeting** in St. Louis, MO. Henry also went to the **Legal Issues in Museum Administration** conference in Dallas, TX (sponsored by the **American Law Institute**). Support for staff development was provided by the **Tulsa Community Foundation**.

**Henry Moy** (pictured left) celebrated 20 years of working at the Museum of the Red River in June. His colleagues surprised Henry with one of his favorite meals—BLTs at AJ's Steak and Pasta. Attendees were encouraged to make donations to the Building Fund instead of gifts. Henry is heavily involved with the local community. He's a member of Herron Foundation, Inc., Rotary Club of Idabel, McCurtain Community Fund, Idabel Regional Arts Council and Idabel Main Street.

Henry is a peer reviewer for *Collections: A Journal for Museums and Archives Professionals* and is on the Board of Advisors for the Chinatown (Chicago) Museum Foundation. He is also the

Condolences to Keeper of Collections Daniel Vick and family on the passing of his father Reece Vick (1944-2017), on June 10.

judge for this year's Illinois State Fair Professional Art Show. Henry recently completed a three-year term on Oklahoma's SP3 (State Policy Pilot Program) Committee, a group tasked with evaluating the future of public arts education. The study was organized by the Oklahoma Arts Council and spearheaded by Americans for the Arts with support from the National Endowment for the Arts.

## PROGRAMS

The Museum will have a **Charter Membership Kick-Off Party and Recent Acquisitions Sneak Peek** July 6 at 6:00 pm. The event is for those who have joined the Museum's new Membership Program. You can still join the program and attend future events. See enclosed flyer for more details.

**Dino Camp: Chomp! Chomp! What's for Lunch**, will run from July 10 to July 12. The camp is for ages 4 to 8. Cost is \$40.

Beat the August heat on Saturday, August 26 with the Museum's **Dog (or Cat) Day Afternoon** painting class. The event is open to artists (or aspiring artists) of all ages. Participants will paint a picture of their pet. Cost is \$45 for non-members and \$40 for members at the Contributor Level or higher. Please bring a good photo of your pet.

Members of the Director's and Curatorial Circles are invited to a **New Acquisitions Preview and Discussion** July 27, led by Keeper of Collections **Daniel Vick** and Quintus H. Herron Director **Henry Moy**.

Members at the Contributor Level and above will also get a **behind-the-scenes tour** of the exhibit-making process on October 10.

Molly Murphy-Adams, an artist based in Tulsa, OK will lead a **Beading Workshop** on September 16. Cost is \$60 for non-members and \$55 for members at the Contributor Level or higher. Lunch will be provided.



▲ From left to right: Alan Bryant, Cindy Bryant and Carolyn White touring the Mary Bratton Curtis Gallery during the Museum's Annual Dinner.

# EXHIBITS (2017)

## Nathaniel and Lana Grey Gallery

*JADE* (through August 13)

Works of “jade” drawn from Museum collections, representing cultures worldwide

*Seats of Power* (August 22 – October 22)

Chairs and other types of seating from around the world

## Lifeways Gallery

Objects from the Museum’s collections which illustrate the ethnological themes of Domestic Life, Beliefs, Art, Technology, and Encounters

## Mary Bratton Curtis Gallery

*Selected Treasures from the Museum’s Collections II, III* (July 18 - October 8)

Continuous series of exhibits highlighting the collections of the Museum

*As Culturas Amazonas* (October 17 - January 14, 2018)

The peoples of the Amazon basin, the world’s largest rainforest, create spectacularly beautiful works from materials found in their environment. While accepting modern conveniences when they can afford to, they are continuing centuries-old craft traditions to enhance their lives and cultures. This exhibit draws from the Museum’s Amazonian collection—one of the most extensive in the US—supplemented with works from the collections of Michael and Jeanne Bernstein of Tucson, AZ.



▲ *JADE* on display in the Nathaniel and Lana Grey Gallery

### RECENT ACQUISITION



▲ **Hematite polishing stone** for ceramics, Caddo(?) Gift of Fred Fagan. 1” 3/4 H x 2 1/4 W

## Gregory S. Perino Archaeological Study Area

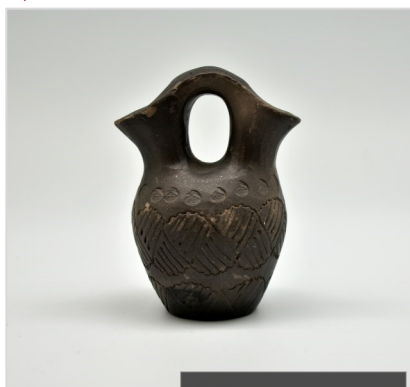
Study collections of regional archaeological material, honoring the work of Gregory S. Perino (1914 - 2005), archaeologist and the Museum’s first director (1975 - 1984). Anticipated to open in July.

### RECENT ACQUISITION



▲ **Carved Jar**, 1989 by Autumn Borts-Medlock (Santa Clara Pueblo, b. 1967) *Museum Purchase*. 3 3/4” H by 5 1/4” W

**Ceramic Vessel**, by Amanda Swimmer (Cherokee, b. 1921) *Gift of Lloyd and Lorene Helms*. 4 1/2” H by 3 1/2” W



### RECENT ACQUISITION

### RECENT ACQUISITION



▲ **Etching on paper *November Evening*** by Jackson Lee Nesbitt (American, 1913-2008) Gift of John and Sue Hinkel. 12” H by 15” W

# MUSINGS



The Museum of the Red River was a huge part of my childhood summers. When I was around 8 years old, my parents enrolled me in Explorers' Camp. After I aged out of the camp for younger children. I came back for teen programs and as a volunteer.

Later, while I was a student at Oklahoma State University, I had the joy of coming back to my hometown for several summers to work the busy program season at the Museum. Later, at the University of Oklahoma College of Law, I founded a student group, the Art and Cultural Heritage Law Student Association. The aim of the group was to highlight legal issues that surround museum management and collections, as well as other issues that arise from art and cultural property.

Now as an attorney practicing in Southeast Oklahoma, I am proud that the community I serve is home to a world class museum, and I'm extremely proud to have the title "Museum Kid". Growing up in a mostly rural area can be isolating. Being involved with the programs made possible by the Museum taught me so much about exploring and embracing the differences among cultural groups. More importantly the Museum's programs and collections provided a meaningful demonstration of the commonalities of the human experience. My experiences at the Museum through the programs and people I had the privilege of getting to know helped to broaden my world view and made me better equipped to engage in our global community.

-Lindsey E. Campbell, *Attorney at Legal Aid Services*



▲ Former "museum kid" and frequent camp counselor **Ryan Weeks** (left) at **Explorer's Camp**, ca. 2014. Ryan is one of many "museum kids" whose experiences have helped him succeed after high school. He is currently an honor student at the University of Arkansas at Little Rock.

# MUSINGS



▲ **Ashton Martin** and **Emerson McElroy** watch **Jemma Pratt** grind corn at **Explorer's Camp**.

From the time I was 16 years old until now, I have been involved with the Museum of the Red River. I worked during the summers while the museum held its summer programs, first through the Choctaw Nation's Summer Youth Work Program and later as a volunteer. At 16, I had already decided that I wanted to have some sort of career in museum work, but my summer job solidified that desire. Teaching students about museums, cultures, and even dinosaurs was what I wanted to do; I wanted to work to involve communities with museums and use museums as the educational tool I have always seen them to be.

Now, as an incoming senior at the University of Oklahoma, I am one academic year from graduating with my Bachelor's degree in Anthropology, with a minor in Native American Studies. At 21, I am still helping with the summer camps at the Museum of the Red River, alongside a staff that often seems like family. By pursuing a career in the education, programming, and/or public outreach areas of museum work, I hope to open up museums and the knowledge they hold to their communities, as I have had the privilege to do with the Museum of the Red River for the past five summers.

-Ashton Martin, *Senior at the University of Oklahoma*

# SCOTLAND'S HERITAGE



▲ Travelers outside Dunrobin Castle with **Dr. Conneach McLean**, tour guide

of Skara Brae and the great stone mound at Maeshowe (ca. 2800 BC). (The latter is famous for its 12th century graffiti left by Vikings that described a great treasure.) The group concluded their northern jaunt by visiting the Ring of Brodgar, a site of standing stones similar to Stonehenge in England.

They returned to the mainland and visited Dunrobin Castle, home to the Dukes of Sutherland, with gardens reminiscent of Versailles. The group proceeded west, and visited Inverewe Garden, where thousands of colorful azaleas were in full bloom. Henry and company boarded another ferry and proceeded to Stornoway, on the Island of Lewis and Harris in the Hebrides Islands. There, they visited Callanish Stones (the largest "standing stones" site in Britain) and St. Clement's Church (the best example of pre-Reformation church decoration in Scotland). A trip to crofter's cottages in Garrannan Blackhouse Village provided a glimpse of harsh rural life in the late 19<sup>th</sup> to mid-20<sup>th</sup> century.

The group returned to mainland Scotland and enjoyed a visit to the Leault Sheepdog farm and Blair Athol Distillery. An excursion to picturesque Loch Ness proved disappointing—there were no glimpses of any monster! The travelers stopped in the cities of Inverness and Glasgow (People's Palace Park and Kelvingrove Gallery) before concluding the tour in Edinburgh.

Haworth native **Robbie Farley** thought "every day was better than the one before..." Others described the food as "surprisingly good..." and the Scots as "the most welcoming people one can ever encounter." Lancaster, PA residents **Marge Bardeen** and **Bob Gethner** called it "...a great trip where we saw everything we hoped to in Scotland" and noted "what a great group of people we've met from Oklahoma..."

The Museum's next sponsored tour is to the archaeological sites and folk-art villages around Oaxaca in Mexico, September 24 to October 1. See enclosed flyer for details and registration.

Director Henry Moy led a group of twenty-one (21) travelers to visit Scotland's major heritage sites and museums. The tour started with Edinburgh Castle, where travelers saw the Scottish crown jewels. From there, they visited the National Museum and its worldwide collection—which includes significant groups of native American materials from the 19th century to the present—and the National Portrait gallery.

From Edinburgh, they proceeded north through the Highlands, to Thurso-Scrabster on the north coast. Along the way, they visited Clava Cairns, a 4,000-year-old site, noted for its surviving "beehive" tombs. After touring the Caithness Horizons Museum in Thurso, they took the ferry to Stromness, on the coast of the main island in the Orkneys. They continued to Kirkwall and visited ruined castles and buildings related to the Earls of Orkney. They also went to the Neolithic settlement



▲ The Isle of Lewis and Harris which is frequently (and incorrectly) referred to as two separate islands by the locals.



Image 1



Image 5



Image 2



Image 3



Image 4



Image 6

## SUPPORT. IMPACT. ENGAGE.

Dear Friends,

The Museum of the Red River is a cultural institution like no other. This is largely thanks to the support of generous individuals who allow us to host programs and exhibits that consistently “exceed expectations”. However, we still have room to grow and improve—especially as we transition in new types of educational programming and increase our digital footprint.

As a result, we’ve created a membership program. Funds from the membership program go towards maintaining and growing our ongoing educational activities and acquisition efforts. They also provide participants with the chance to engage with the Museum and its collections in a more meaningful way.

Members may receive perks like invitations to members-only events at the Museum of the Red River or even free admission to over 1,000 museums across the United States.

To join, visit [www.museumoftheredriver.org/give](http://www.museumoftheredriver.org/give) and click the “Become a Member” button. You can also register by mail (use the form on reverse) or at The Museum Store. Please allow up to 1 - 2 weeks for your membership card to arrive.

Thanks for your support.

Sincerely,  
Brian Hendershot, *Communications and Outreach*

# Museum of the Red River Annual Membership Form (Please Print)

Complete this form and mail it to 812 East Lincoln Rd., Idabel OK 74745. Make checks payable to Idabel Museum Society Inc. The information provided below will be used to send you the Museum's quarterly newsletter, your membership card and timely updates about upcoming events and programs. Please allow 2 weeks for your membership card to arrive. Membership can be confirmed at the Museum's receptionist's desk during normal business hours.

**Name:** \_\_\_\_\_

**Mailing Address:** \_\_\_\_\_

**Phone:** \_\_\_\_\_ **Email:** \_\_\_\_\_

City

State

ZIP code

I want all Museum correspondence, including the quarterly newsletter...

Mailed to me

Emailed to me

## Membership Level<sup>7</sup>

[Please check one]

### Member (\$50)

- Advance notice of, and priority registration for, programs and events
- Two invitations for select members-only events, including preview receptions and meetings with visiting artists and scholars
- Specially guided tour through the Museum for you and your guests (Please call ahead)
- A copy of SHERDS, the Museum's quarterly newsletter

### Contributor (\$250)

- All the benefits of being an Associate plus...
- Annual, behind-the-scenes tour that explores the Museum's collections and the exhibit-making process
- Reduced registration fees for programs and events

### Curatorial Circle (\$500)

- All the benefits of being a Contributor plus...
- Periodic invitations to view new acquisitions before they're available for public viewing
- One complimentary Associate membership to give to a friend or family member
- An additional 5% off in the Museum store (15% total)

### Associate (\$100)

- All the benefits of being a Member plus...
- Membership in the North American Reciprocal Museum Program (NARM), which provides reciprocal benefits to over 900 museums<sup>8</sup>
- Membership in the Reciprocal Organization of Associated Museums (ROAM) which provides reciprocal benefits to hundreds of museums in the United States<sup>9</sup>
- 10% off regular purchases in the Museum Store
- Recognition on the Museum's website

### Director's Circle (\$1,000)

- All the benefits of being in the Curatorial Circle plus...
- Annual, late night champagne tour of the Museum and its collections
- Two extra invitations for events (4 total)
- An extra Associate membership to give to a friend or family member (2 total)
- An additional 5% off in the Museum store (20% total)

---

Image 1: Summer intern **Angelica Bohanan**, with campers **Braylin Wesley** and **Simon Hamilton**.

Image 2: **Katsina "Angak-china"**, late 20<sup>th</sup> century by Simon Polingyumptewa (Hopi). *Gift of June Beasley* to the Museum's *Baker-Beasley-Wetherell Collection*. 12" H x 3<sup>3</sup>/<sub>4</sub>" W

Image 3: Marionette, ca. 1989 by Art Thompson (1948 - 2003), Nuu-chah-nulth (Northwest Coast). *Gift of John and Dr. Meryl Lipton Lavine*

Image 4: Explorer **Gage Williams** in his handcrafted West-Mexico style headgear.

Image 5: *Acrocantbosaurus atokensis*

Image 6: Double-walled basket (ca. 1970) Choctaw (Mississippi). Gift of Sara Gettys, in Memory of J. Marshall Gettys

7: Eighty-five percent of each membership is deductible for federal income tax purposes.

8: Locate other NARM institutions at [narmassociation.org/map](http://narmassociation.org/map). Show your membership card with a valid ID to receive free admission during regular hours, discounts at museum shops and select discounts on concerts and lectures. Some institutions may grant free admission for guests. Please contact the institution you plan to visit for more information.

9: Located other ROAM institutions at [sites.google.com/site/roammuseums/home/list-of-roam-museums](http://sites.google.com/site/roammuseums/home/list-of-roam-museums). Benefits may vary at different institutions. Please contact the institution you plan to visit for more information.



# OAXACA: FREE AND SOVEREIGN

SEPTEMBER 2017 TRAVEL STUDY

**Join the Museum on a journey to Oaxaca**, “The Free and Sovereign State” of Mexico, September 24 – October 1, 2017. It’s home to dozens of indigenous peoples and cultures—most notably the Zapotecs and Mixtecos. Oaxaca’s rugged mountain ranges create one of the most biologically diverse states in Mexico. For centuries, these have provided material for folk art traditions in wood, ceramics, and textiles. From centrally-located Oaxaca City, the tour will include visits to indigenous villages devoted to various crafts (e.g., Atzompa and Teotitlán del Valle).

Other destinations include the archaeological sites of Monte Albán, Mitla and various museums in Oaxaca City— a vibrant and architecturally stunning city with a long-established art scene. Travelers will have free time to explore other parts of Oaxaca and the surrounding area as they wish, with optional activities such as cooking classes, mezcal production tours, etc.

Cost is \$1,345 or \$1,295 for members at the Contributor Level or higher (double occupancy with 3 meals/day for 8 nights; single supplement is an additional \$245. This does not include transportation to/from Oaxaca, costs of obtaining passports, visas or other travel documents, fees for personal services (including tipping), costs of optional events or tours not included in itinerary, nor local departure taxes. No refunds are available for unused land arrangements or for costs incurred through absence or deviation from the stated itinerary for any reason, including illness. Contact the Museum for more information.

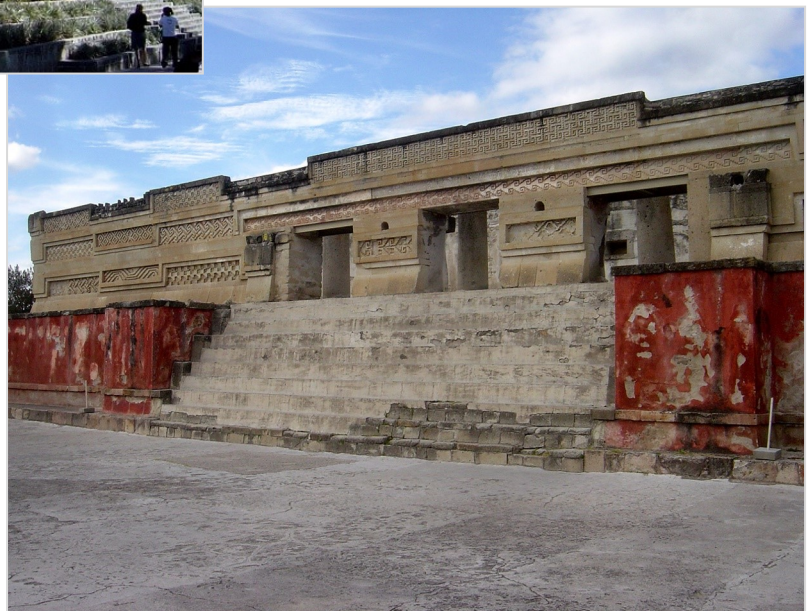


*Right:* Santo Domingo de Guzmán [Photo taken by Bobak Ha'Eri, Wikipedia]

*Below:* Chapulines (fried grasshoppers) at the Mercado Benito Juarez [Photo by N. Saum, Wikipedia] ▼



▲ Ballgame court at Monte Alban [Photo taken by Bobak Ha'Eri, Wikipedia]



▲ Palace at Mitla [Photo taken by Bobak Ha'Eri, Wikipedia]

# Museum of the Red River

## Statement of Liability

Tour participants in this program hereby agree that the Museum of the Red River is acting as Principal Agent, working on their behalf, and hereby release the Museum of the Red River, Idabel Museum Society, Inc., Herron Foundation, Inc., the City of Idabel, as well as any staff members, employees, and other agents engaged by any of these organizations, from any and all claims and actions resulting from any loss or injury incurred while participating in this program. Participants also agree to reimburse any of the above-mentioned parties for any fees, fines, legal and any other costs incurred by them which arise from any action or cause of action, claim, or demand initiated on behalf of any traveler. Any information and services are provided at the request of the traveler, including the issuing of any tickets and/or vouchers, arranging for any other transportation, and any hotel accommodations. Agents operate under the express condition that they are not liable for any injury, damage, loss, accident, delay, or irregularity, which may be occasioned either by reason of defect of any vehicle conveying the passenger or through the act of default of any company or persons engaged in carrying out the arrangements of the tour, or otherwise in connection therewith, or of any hotel, or employee. Agents accept no responsibility for losses or accidental expenses due to delay or changes in schedules, defaults, or over-bookings by hotels, sickness, weather, strike, war, acts of terrorism, or other causes. All such losses or expenses will have to be borne by the passenger. Baggage is at "owner's risk" throughout the tour. **Purchase of traveler's insurance** against loss, damage, and any other mishaps **is strongly encouraged**. Agents have no special knowledge or information regarding any supplier insolvency, unsafe conditions, terrorist or social unrest, health hazards, or any weather conditions creating dangerous situations, other than what has appeared in public media. Travelers should consult the Traveler Advisory Section of the US State Department at (202) 647-5255. For current medical information, contact the Centers for Disease Control at (877) 394-8747.

Refunds will be available upon written request. If received by August 29 a full refund of monies paid, **less a \$200 processing fee** per traveler will be returned. If received by September 18, a refund of monies paid, **less a \$350 processing fee per traveler, plus any non-recoverable fees from local operators, hotels, airlines, etc.** will be returned. No refunds will be made after September 19.

----- Cut here -----

## The Free and Sovereign State of Oaxaca

### Registration Form

A deposit of \$500 per traveler is due by August 11, 2017. **By making any deposit towards this program, travelers acknowledge(s) having read the Statement of Liability and noting refund policy, and understand(s) and agree (s) to all its terms.** Final payment is due by September 1. Complete this form and send with a check or money order covering deposit (at \$ 500 p/p) and mail to the Museum of the Red River (812 East Lincoln Rd., Idabel OK 74745), or email to Brian Hendershot (pr@motr.org). **Include a photocopy of your passport information/photo page for each traveler.** A final itinerary and invoice will be emailed to the traveler(s) after this form is returned.

(1) **Traveler Name:** \_\_\_\_\_ **Passport No:** \_\_\_\_\_ **Expiration Date:** \_\_\_\_\_  
(As it appears on passport)

(2) **Traveler Name:** \_\_\_\_\_ **Passport No:** \_\_\_\_\_ **Expiration Date:** \_\_\_\_\_  
(As it appears on passport)

**Traveler (1) Address:** \_\_\_\_\_ **Email:** \_\_\_\_\_

**Daytime Phone Number:** \_\_\_\_\_ **Alternative Phone Number:** \_\_\_\_\_

**Emergency Contact :** \_\_\_\_\_ **Phone Number:** \_\_\_\_\_

**Emergency Contact :** \_\_\_\_\_ **Phone Number:** \_\_\_\_\_

**Traveler (2) Contact Address:** \_\_\_\_\_ **Email:** \_\_\_\_\_

**Daytime Phone Number:** \_\_\_\_\_ **Alternative Phone Number:** \_\_\_\_\_

**Emergency Contact :** \_\_\_\_\_ **Phone Number:** \_\_\_\_\_

**Emergency Contact :** \_\_\_\_\_ **Phone Number:** \_\_\_\_\_

\_\_\_\_\_ I would like to occupy a single room at an additional \$245      I plan to share a twin-bedded room with \_\_\_\_\_

**By signing below and returning form with deposit, traveler(s) accept all terms and acknowledge they have read the Statement of Liability.**

Signature of Traveler(s): (1) \_\_\_\_\_

(2) \_\_\_\_\_

# THE MUSEUM IN PICTURES



*Clockwise:* Children from Valliant Public Schools engaging in a time-honored field trip tradition—playing the drum loudly.

**Tammy Dong** won Best of Show (ages 16 to 19) at this year's **Expressions of Youth** Art Show.

**Emerson McElroy, Kaylen Eickel, Rylee Rowan, Abbie Scott, Bray Wesley and Ryan Robbins** of the Mesoamerican ballgame team "Human-icorns" make their best "warrior faces".

**Chloe Farley** tries to score on **Rylee Rowan** during the Mesoamerican ballgame at this year's **Explorer's Camp**. Fortunately, no children from the losing team were ritually sacrificed.

**Robbie Farley, Shirley Pogue, Donald and Mary Ann Ray** pose for a picture at Clava Cairns in Scotland. The tombs served as the inspiration for the fictional Craig Na Dun from the *Outlander* TV series.



# RECENT ACQUISITIONS

## Gifts to the Collections

Group of twenty (20) native American objects: three (3) Hopi gourd **rattles** including *Angak-china* (long-haired katsina, signed **Simon Polingyumptewa**), thirteen (13) **basketry works** from Kootenai, Mississippi Choctaw, Alabama Coushatta, Oklahoma Cherokee (2, including lamp and shade by **Pearl Wolf**), Hopi (2), Jemez, Paiute, Salish and Tohono O'Odham [Papago] (2) traditions, two (2) Seminole **dolls**, and two (2) Yaqui **dance masks** (one each by **Louis Valenzuela** and **David Valenzuela**). *Gifts of June Beasley* (AZ), to the Museum's *Baker-Beasley-Wetherell Collection*

Group of thirty-eight (38) ceramic and stone **objects** from native American cultures including Precolumbian traditions of the North American Midwest, coastal Veracruz, Oaxaca, Chiapas and West Mexico, the Atlantic watershed of Costa Rica, northwestern Ecuador, and Andean and riverine Peru, plus modern and contemporary works from Mexico and Panama; carved stone tablet from north India and stone currency of the Ndani, Irian Jaya, Indonesia. *Gift of Drs. Ernesto and Luisa Lira* (TX)

North Carolina Cherokee double-spouted ("wedding vase") ceramic **vessels** (2): one signed **Amanda Swimmer** (b. 1921), the other signed **Amy Roberts** with *Oconaluftee Village* stamp; purchased by donors in 1976. *Gift of Lloyd and Lorene Helms* (OK)

Group of twenty-one (21) native American baskets and oak splint containers, representing Mississippi Choctaw (3, including a work by **Alicia Weeks**), Cherokee (9, including works by **Nancy Blackfox**, **Emmaline Garrett**, **Betty Lossiah**, **Mollie Lossiah**, and **Mike Reed**), Shinnecock, Penobscot, Hopi, Tarahumara (4), Tohono O'Odham [Papago], and Akimel O'Odham [Pima] traditions, (all 20<sup>th</sup> century). *Gift of Ron and Lynne Wetherell* (FL), to the Museum's *Baker-Beasley-Wetherell Collection*

**Etching** on paper: *November Evening* by **Jackson Lee Nesbitt** (American, 1913- 2008). *Gift of John and Sue Hinkel* (MO)

Group of four (4) ceramic objects including engraved **bowl** (Chavin Culture [Peru], ca. 500 BC) and three (3) **effigy vessels**, including dog, armadillo and human figures (West Mexico, ca. 100 BC – AD 400). *Gift of David Model* (CA)

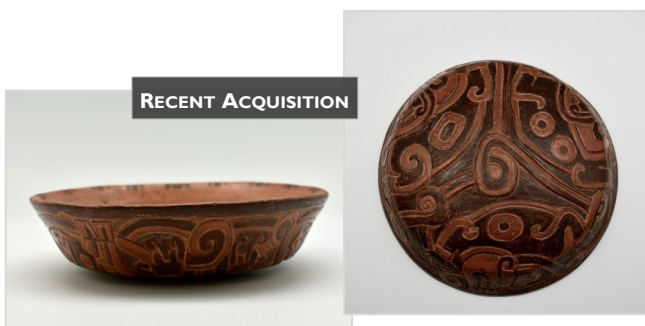
**Painting** by Kiowa artist **Robert Redbird** (1939 - 2016) and two (2) photographic prints from original glass plate negatives (ca. 1910): 1) Hopi artist **Nampeyo** making pottery and (2) native women selling ceramics at Santa Fe railway station at Laguna. *Gift of Collin Groves* (TX)

Carved wood **mask**, embellished with hammered aluminum (Malinke-style, West Africa, late 20<sup>th</sup> century) and a hematite **polishing stone** (for burnishing ceramics?), a McCurtain County surface find. *Gift of Fred Fagan* (TX)

## Museum Purchases

Four (4) signed and numbered **prints** by **Virgil Ortiz** (Cochiti, b. 1969), of cover art images for native American comic series *Revolt*.

Carved ceramic **vessels** (2) by **Autumn Borts-Medlock** (Santo Clara Pueblo, b. 1967)



▲ **Bowl**, ca. 500 BC, Chavin (Peru) *Gift of David Model*. 2" H by 7¼ Dia.



▲ **Basket**, early 20<sup>th</sup> century, Penobscot (New England) *Gift of Ron and Lynne Wetherell*, to the Museum's *Baker-Beasley-Wetherell Collection*. 6" H x 10 ½" Dia.

**Feline effigy mask**, late 20<sup>th</sup> century, Embera (Panama). *Gift of Drs. Ernesto and Luisa Lira*. 9½" H by 9½" W



# GIFTS AND SUPPORT<sup>1</sup>

## Gifts to the Libraries (including Research, Learning Center, and Public Reference)

Chris Conn, Dale Cook, Sally Gettys, **Henry Moy**, The Lotus Shop/Crow Collection of Asian Art, **Mike and Anita Stevenson**

## Grants

Herron Foundation, Inc., **Tulsa Community Foundation**

## Other Gifts

James Bailey, Jerry Ellis; **First State Bank—Valliant**, **Idabel Kiwanis Club**, **Girls Gone Wine**, **The Gospel Tabernacle School**

## Gifts in Kind

**Dr. Robert and Pam Brooks**, Paul Shepard, **Martha W. Sinclair**, **Bob and Robin Terry**, **Tony Yee**; Creative Escapes, Inc., The Girls Gone Wine, Nerwin & Martin Fine Arts Services

## Membership (General Support)

*Directors Circle:* **Bruce and Cheryl Delp**, **Donald A. and Mary Etta Herron**, **Don and Nelda Shaw**, **Taylor and Becky Shaw**, **Cherie Townsend**

*Curatorial Circle:* **Dian Jordan Werhane**

*Contributors:* **Mike and Linda DeBerry**, **Dr. Lewis Stiles**, **Eddie and Carolyn White**

*Associates:* **Ai-ling Chen**, **Dr. Kaaren C. Day**, **Don and Peggy Dugan**, **Robbie Farley**, **Duffy Armstrong Farrell**, **Lou C. Kerr**, **Tina and Dr. Bruce King**, **Hannah King**, **Katherine Kohler**, **Lloyd Page**, **Doris Perkins**, **Robert and Lindsey Phillips**- *In Celebration of their Wedding:* **Adrian and Kristi Routh**, **Nancy Setter**, **Jeff and Elaine Smith**

*Members:* **Kathryn Kohler**, **David Lundahl**, **Nancy Setter**, **Katie White**

*Museum Donors (individual and family) to other funds are provided membership benefits at appropriate levels.*



▲ **Revolt print** by **Virgil Ortiz**, (Cochiti, b. 1969) *Museum Purchase*. 17" H by 13" W



▲ Untitled painting, by **Robert Redbird** (Kiowa, 1939 - 2016). *Gift of Collin Groves*. 22½" H by 30" W

## Corporate Partners

(Business donors supporting the Museum's free admission policy and other programs)

AJ's Steak and Pasta, All Smiles Dental, *Bob Terry Insurance and Financial Services*, *Bear State Bank*, **Bob Norris**, Choctaw Electric Cooperative, **Colonial Lodge Independent Living**, Complete Care Medical Supply, **D & M Chipping**, Don Shaw— Attorney, Edward Jones, Inc. (Idabel), *Fenix Industries*, **First State Bank—Idabel and Valliant**, Flooring Outfitters, **G.I Surplus and Pawn**, **The Girls Gone Wine**, Hometown Rental, **Idabel Coca Cola Bottling**, **Idabel Kiwanis Club**, The Idabel National Bank, *Idabel Veterinary Clinic*, *International Paper*, *Judy's Furniture*, McCurtain County Bar Association, **McCurtain Daily Gazette-News**, Michael S. McElroy Insurance, My Doctor Pediatrics and Urgent Care, Pan Pacific Products, **Norwood-Nation Funeral Home**, **Quality Rock Inc.**, **Robbins RV + Motorsports**, *Rustin Concrete*, **SETCO**, **Tom Ellis— Attorney at Law**, *Vojai Winery*, *Walmart Store # 117 (Broken Bow)*, Waterhouse of Idabel, Weeks Insurance, **Weyerhaeuser NR Co.**

1: Names in **bold** are of donors whose gifts were received in the last quarter

# CONSTRUCTION



*Clockwise:* Routh Enterprises crew members cleaning the demolition area around the Museum's old bathrooms and lobby.

A construction crew tears off the front of the old Museum building. Once completed, the area will house an enlarged classroom.

Workers grinding the floor of the new ACRO gallery. The grinding will produce a floor with a smooth, natural-looking texture.

Workers moving columns from the front from the deconstructed Museum bathrooms and lobby.

Nerwin & Martin Fine Arts Services staff moving cases into the renovated Lifeways Gallery.



Find us on  

[www.museumoftheredriver.org](http://www.museumoftheredriver.org)

# BUILDING FUND<sup>1</sup>

## 2016-2017 EXPANSION AND NEW CONSTRUCTION

### Sponsors

Herron Foundation, Inc.  
Idabel Museum Society, Inc.

### Benefactors

[10,000+]

Donald A. and Mary Etta Herron  
Janet Herron and Gamaliel Leyva

### Supporters

[5000+]

Richard Q. and Katie E. Herron  
Suzannah M. Herron—*In Memory of  
Mary and Quintus Herron*  
Henry Moy  
Vickie and Scott Smith  
Quintus H. Herron Trust

### Patrons

[1000 +]

Chris and Rudy Michalek  
Timmi and Mark Ross  
Donald R. and Nelda F. Shaw  
Taylor Shaw and Becky Stone  
Billie Tomlinson  
Don Shaw, Attorney  
Michael S. McElroy Insurance  
Quality Rock, Inc.

### Sustainers

[500+]

Jane and Tom Harding  
Jack Moy  
Cheryl Townsend  
Michelle F. and Terry D. Walker  
Dian Jordan Werhane  
Bill and Sharon White  
Rotary Club of Idabel  
McCurtain County Bar Association

**ARCHITECTS:** Newcomb Associates, AE

**GENERAL CONTRACTOR:** Routh Enterprises

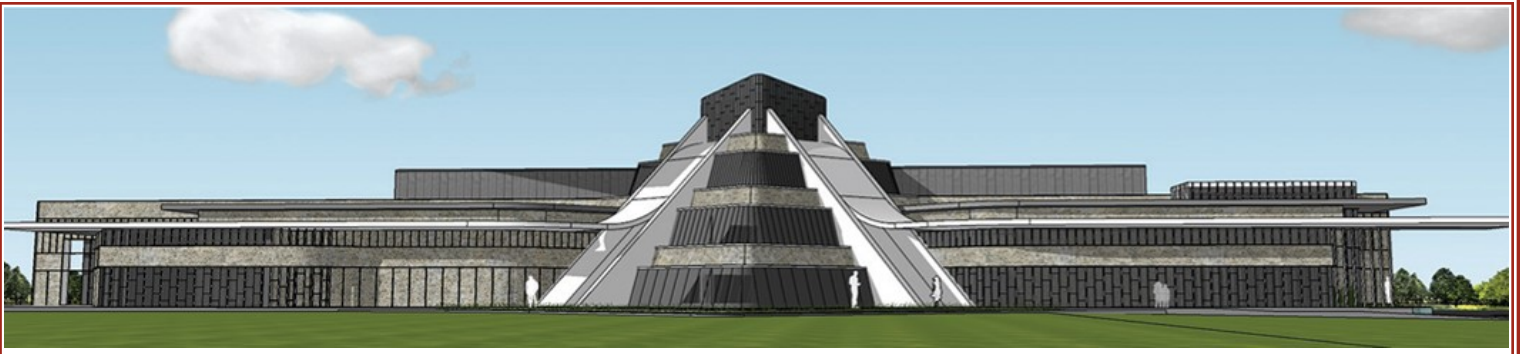
## Museum Building Fund

**[2017]** Frank and Jeanie Acker, Anonymous (2), Jeanette and Greg Bohanan, Dr. Robert and Pamela Brooks, Alan and Cynthia Bryant, Dr. Kenneth Carpenter and Yvonne Wilson, Leora and Mehdy Douraghy, Mayor Tina Foshee-Thomas and Lewis Thomas, Jane and Tom Harding, Don and Mary Etta Herron, Richard Q. and Katie E. Herron, Suzannah M. Herron-*In Memory of Mary and Quintus Herron*, Tina and Bruce King, Doris and Don Leatherwood, Henry Moy, Jim Newcomb and Tobin Newcomb, John and Ida Ramsey, Javier and Irma Reto-Viteri, Timmi Ross, Mr. and Mrs. Larry C. Shaffer, Senator Joseph and Kimberlee Silk, Scott and Vickie Smith, Lewis and Karla Schwartz, Dr. Lewis Stiles, Bob and Robin Terry, Sallie Webb, Bill and Sharon White, Carolyn and Eddie White; Rotary Club of Idabel, The Girls Gone Wine

## THERE'S STILL TIME!

Join other friends and families  
and donate to the Museum's  
Building Fund.

<sup>1</sup>: All gifts to the building fund will be recognized through 2018, with gifts of \$500 or more permanently acknowledged in the Museum's new lobby.



The Museum of the Red River is the largest exhibiting facility within a 150 mile radius, providing both learning opportunities and aesthetic experiences to its audiences. Through its exhibits and public educational programs, it offers unprecedented access to some of the finest cultural artifacts in the nation, representing native American groups and others from around the world. Its three Student, Public Reference, and Research libraries offer over 5000 volumes and printed materials illustrating cultural history. The Holland and Sallie Webb Family Learning Center provides hands-on, interactive experiences for students of all ages. The Museum is open 10 AM to 5 PM Tuesday through Saturday and 1 PM to 5 PM on Sunday. Closed Mondays and national holidays. **Admission is free.**

Off-site displays are installed at four regional libraries (Idabel, Broken Bow, Valliant, and Hugo), Southeastern Oklahoma State University's McCurtain County Campus, the Oklahoma Forest Heritage Center and the Kiamichi Family Medical Center.

The Museum's budget is supported by investment income, earned income, and the ongoing support of individuals, families, corporations and foundations. It neither solicits nor accepts government funding. Additionally, it works in cooperation with other arts and cultural agencies to provide activities and events to the public.



812 E. Lincoln Road  
Idabel, OK 74745  
(580) 286-3616



**RETURN SERVICE  
REQUESTED**

## HEADS UP!!

**The next issue of SHERDS could be your last!** If we have not heard from you in two or more years, your subscription may end with the Oct. - Dec issue. We will continue to send SHERDS to anyone who makes a gift to the Museum or joins its membership program. You can get our newsletter by email, when you sign up online at [ww.museumoftheredriver.org](http://ww.museumoftheredriver.org). Past issues are available online at [ww.museumoftheredriver.org/press](http://ww.museumoftheredriver.org/press).